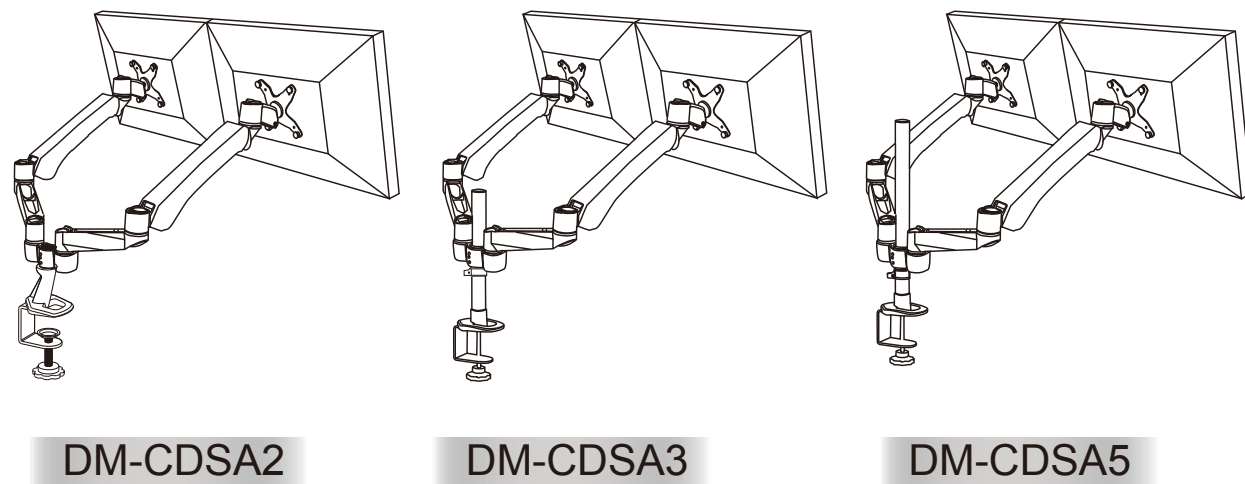



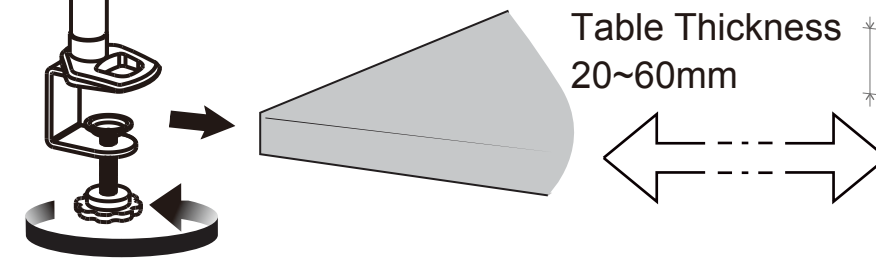
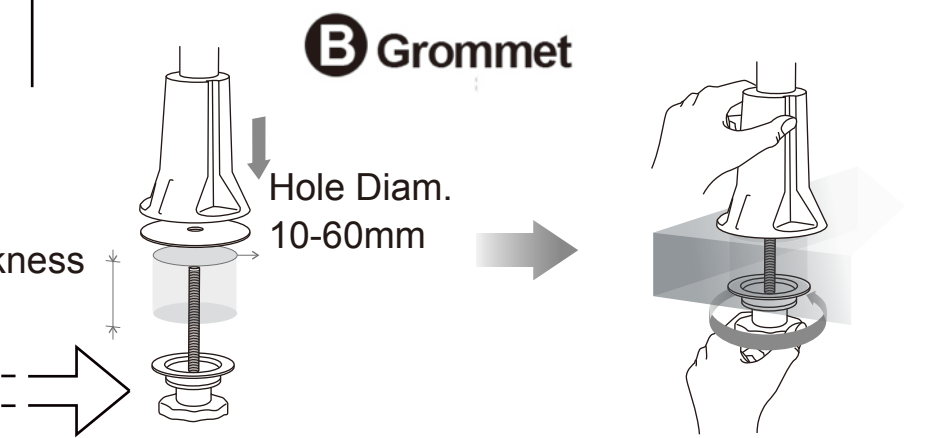
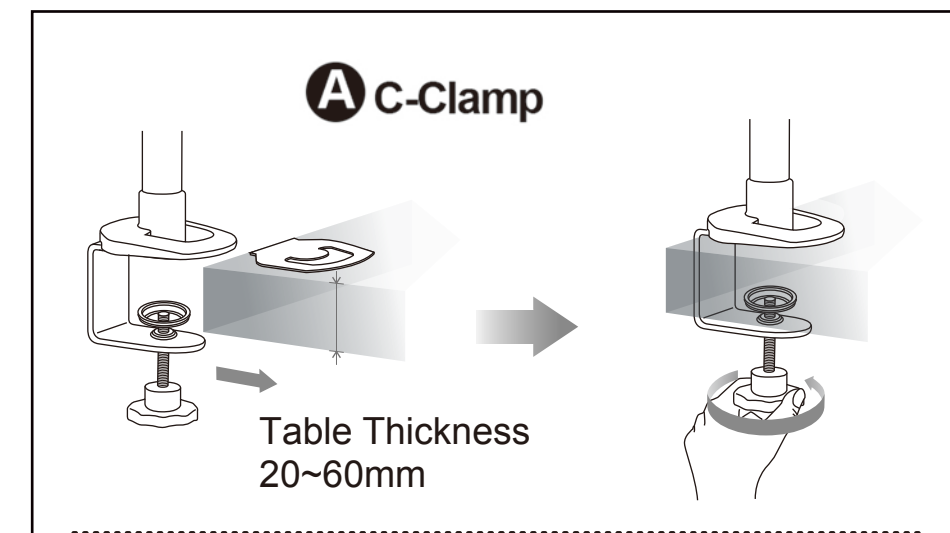
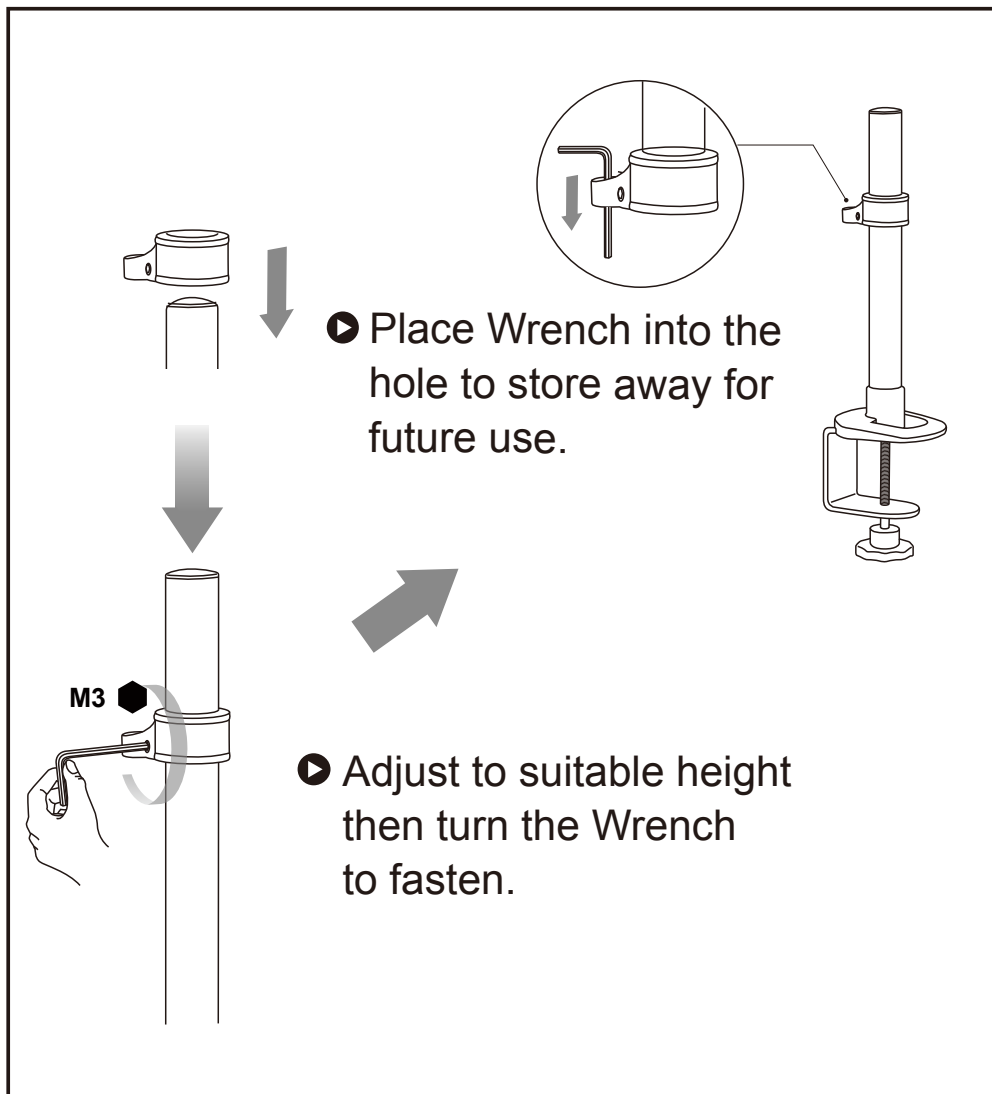
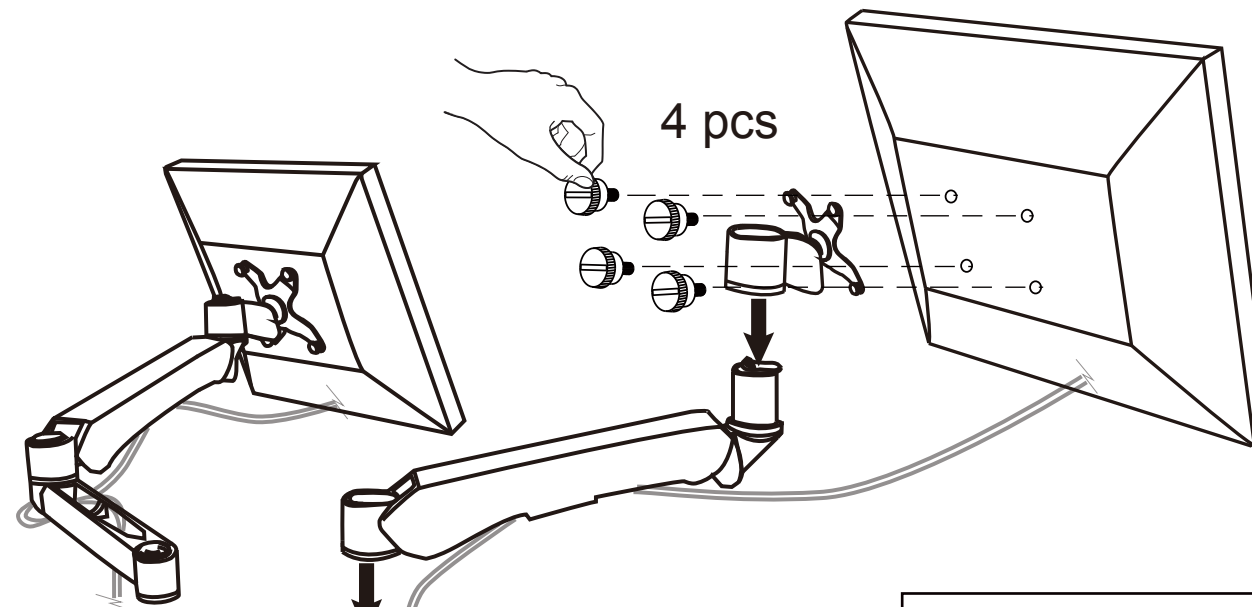
Installation Manual

1

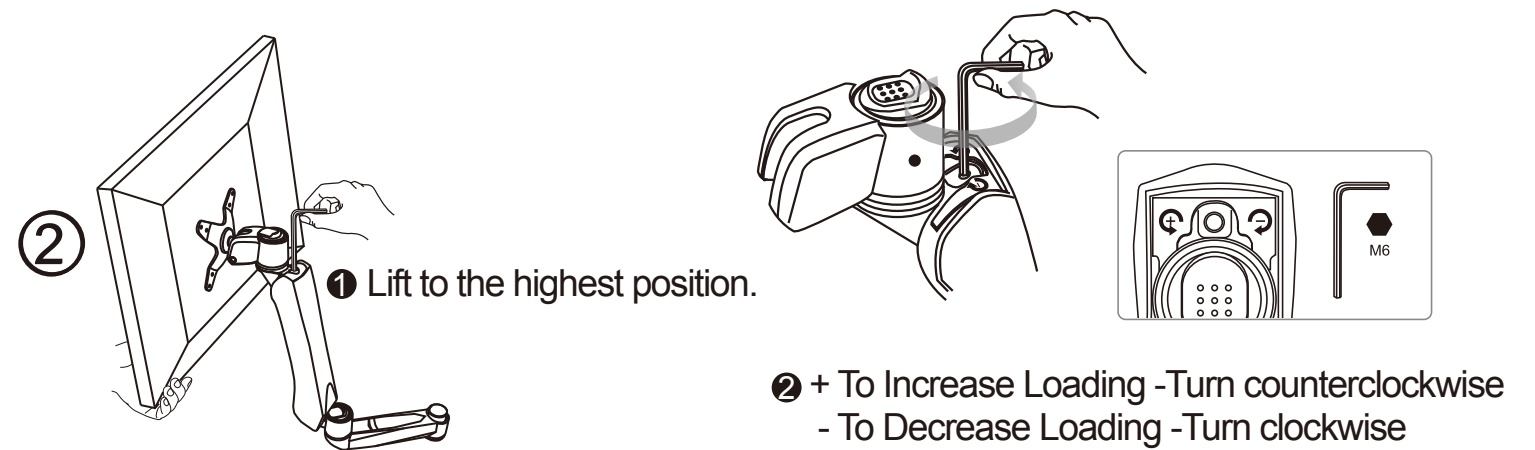
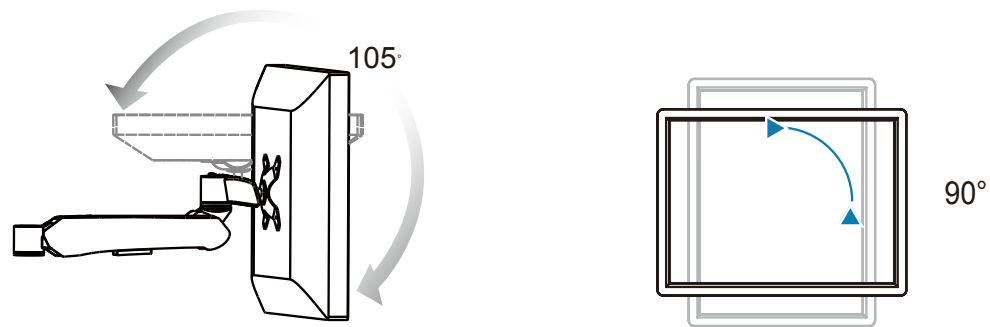
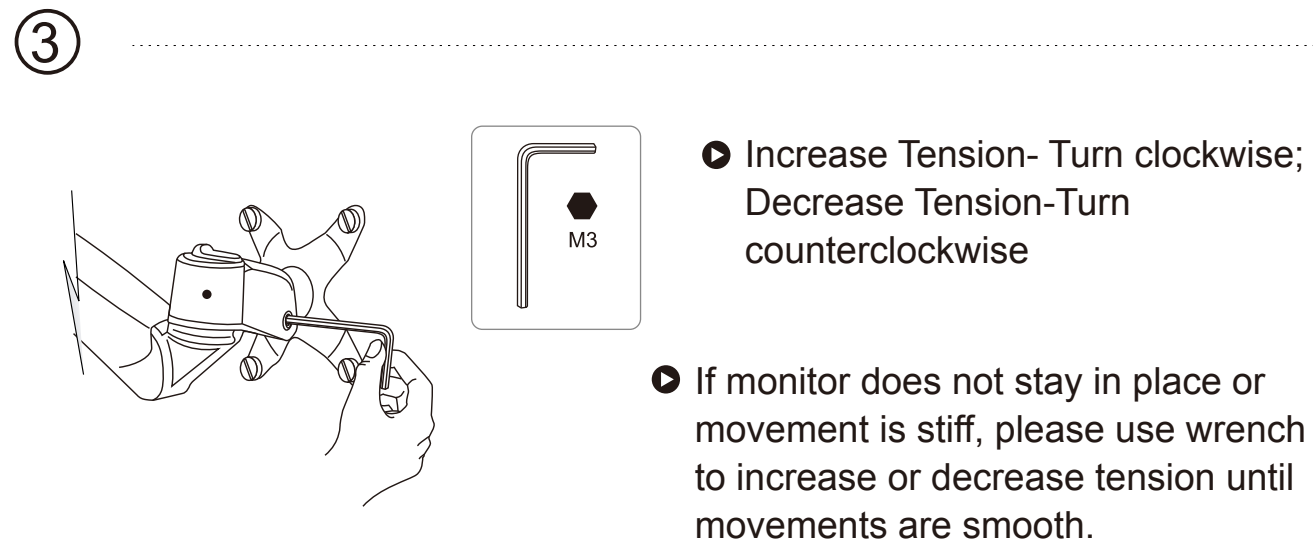
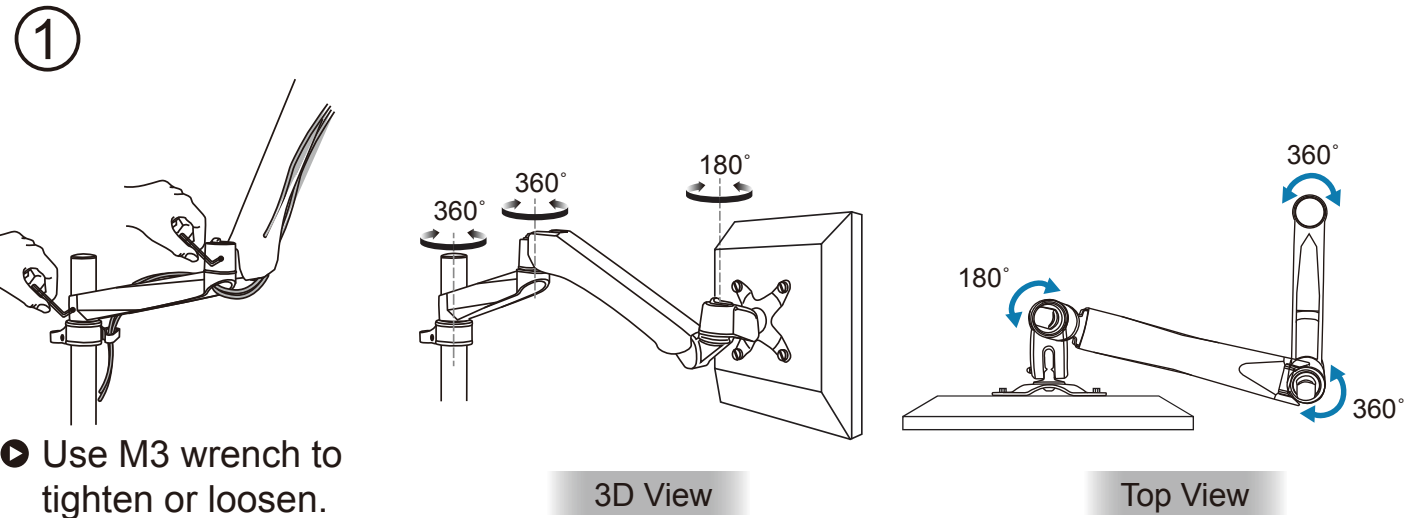
Installation



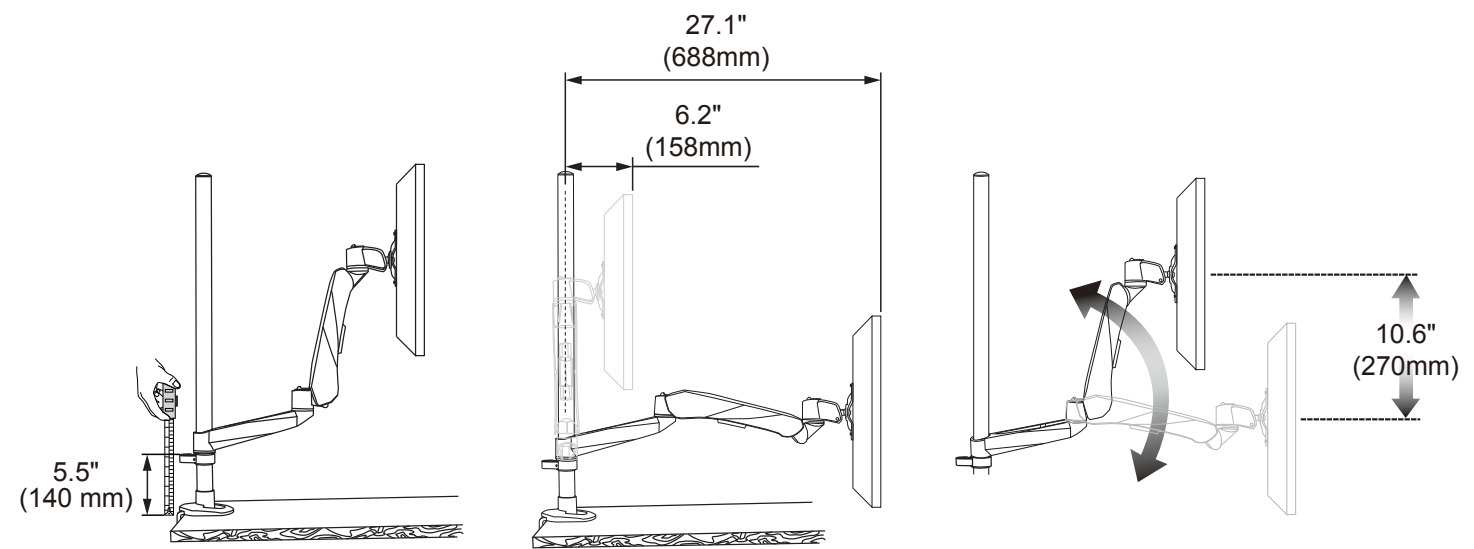
 Each monitor
2-9 kg
4.4-19.8 lbs



2 Adjustment



! Important!
Before installing monitor onto the arms, please double check the net weight of monitor. The mount spring mechanism is set at default for weight range of 2.5kgs – 4.5kgs. For any weight out of this range, either less than 2.5kgs or more than 4.5kgs, please use M6 wrench for tension adjustments. Be sure to pull the spring arm to the utmost upright position BEFORE making the adjustments.



! Warning!
Stored Energy Hazard: The arm mechanism is under tension and will move up rapidly by itself, as soon as attached monitor is removed. For this reason, DO NOT remove monitor unless the arm has been pulled to full and highest position! Failure to follow this instruction may result in serious personal injury and/or equipment damage!